

Product Datasheet:

ELEMENT 25/220-240/600 CS T W KR

(White)

ELEMENT 25/220-240/600 CS T B KR

(Black)

500mA-600mA

Product Description

- Compact size for miniaturized track light luminaire design
- Suitable for 1 circuit system
- Easy current selection via dip switches
- 30.000h lifetime
- Black/White color available
- Low ripple



(To be updated)

Product Benefits

- High light of quality with low ripple current
- High flexibility from 2 different output currents
- Small housing compatible to popular track systems in black or white

Applications

- Shop
- Retail
- Public building

Approval Marks



Product Features

- | | |
|---|--|
| – Output currents: 500/600mA | – 30'000 h lifetime at $t_{cmax} = 70\text{ °C}$ |
| – Output voltage: $30V_{DC} - 42V_{DC}$ | – Fixed Output (i.e. no dimming) |
| – Output power: 15W – 25.2W | – Typ. Efficiency: 86% |
| – Input voltage : 220 – 240 V_{AC} | – SELV |
| – Suitable for class II luminaires | – Ambient temp range, t_a : -20 °C to $+35\text{ °C}$ |

Electrical Specifications

	Item	Value	Unit	Remarks
Input	Nominal voltage	220-240	VAC	
	Nominal frequency	50 / 60	Hz	
	AC voltage	198 – 264	VAC	Safety voltage range
	Max voltage	300	VA	2 hrs
	Nominal current	195	mA	230V
	THD	<20	%	Full load, 230V, 50 Hz
	Power factor	0.95		Full load, 230V, 50 Hz
	Efficiency	86	%	Full load, 230V, 50 Hz, typical
	No-load power	n/a		Load switching on output side is not permitted
	Power loss	4.1	W	at 230V, Input power 29.3 W max.
	Protection class	NA		Suitable for class II luminaires
	Inrush current	12	A	twidth = 172 µs typical (measured at 50% I _{peak})
	Max units per circuit breaker	B10: 50; B16: 80 C10: 83; C16: 133; B25: 125; C25: 208;		
	Leakage current	<0.7	mA	Output floating
Output	Nominal voltage range	30-42	VDC	Refer to Table 1 for details
	Max voltage	60	VDC	Open circuit
	Nominal current	500/600	mA	
	Current accuracy	+/- 7.5	%	
	Current ripple	<=3	%	(I _{max} -I _{min}) / (I _{max} +I _{min}) @ 100 Hz
	Pst LM	≤ 1		
	SVM	≤ 0.4		
	Nominal power range	15-25.2	W	Partial Load.
	Max power	25.2	W	T _a ≤ 35°C
	Galvanic isolation	SELV		Output to mains - Touch current < 0.7 mA
Dimming	Dimming control	n/a		Not dimmable
	Dimming range	n/a	%	
	Dimming technique	n/a		
	Frequency	n/a	Hz	
	Galvanic isolation	n/a		
Environment	Ambient temperature range t _a	-20...+35	°C	Refer to Table 1 for details
	Maximum case temperature t _c	70	°C	Measured on t _c point indicated of the 2D drawing
	Max. case temp. in fault condition	110	°C	
	Storage temperature range	-20...+80	°C	Cool down before operating
	Relative humidity	5...85	%	Not condensing
	Surge transient protection	1 / 2	kV	L/N; LN/PE acc. IEC 61547
	Environmental rating	Indoor		
	IP rating	IP20		
	Mains switching cycles	> 100.000		
	Expected lifetime	30.000	hours	T _c max = 70°C, 10% failure rate
Protections	Over temperature	Yes		Automatic, reversible
	Over load	Yes		Automatic, reversible
	No load	Yes		Limitation of Output voltage < 60V
	Short-circuit	Yes		Automatic, reversible
	Output overvoltage	Yes		Limitation of Output voltage < 60V

Wiring Diagram

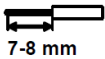
Terminal: Push in terminals

Weight: 85g

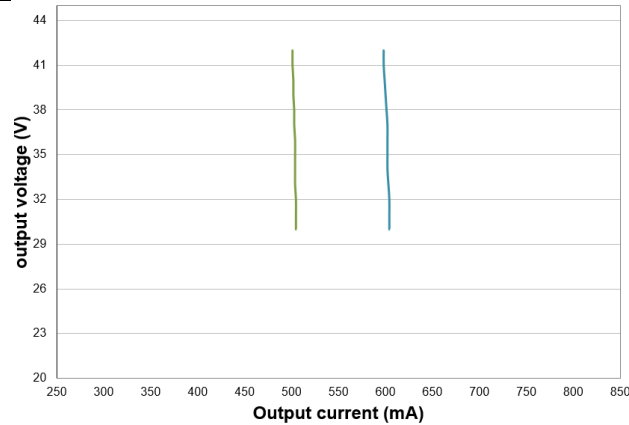
Wire preparation:

Push in
s: 0.5-1.5

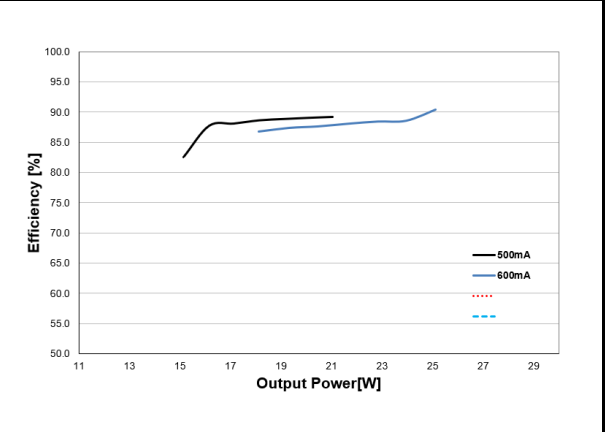
f: 0.75-1.5



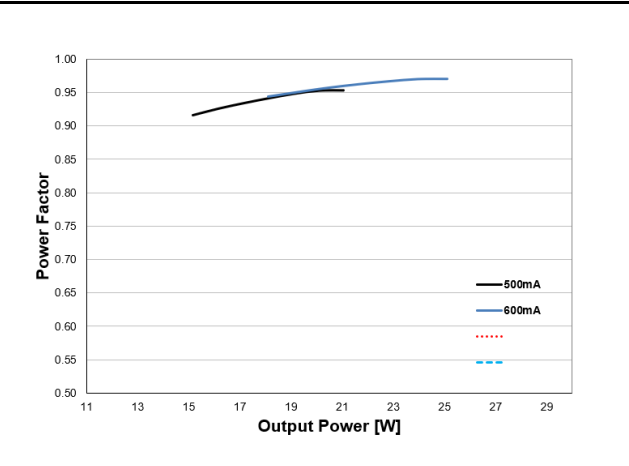
Typical Operating window



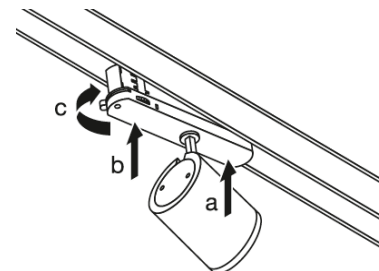
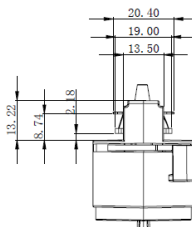
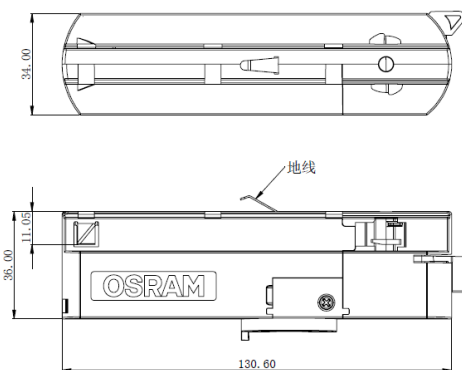
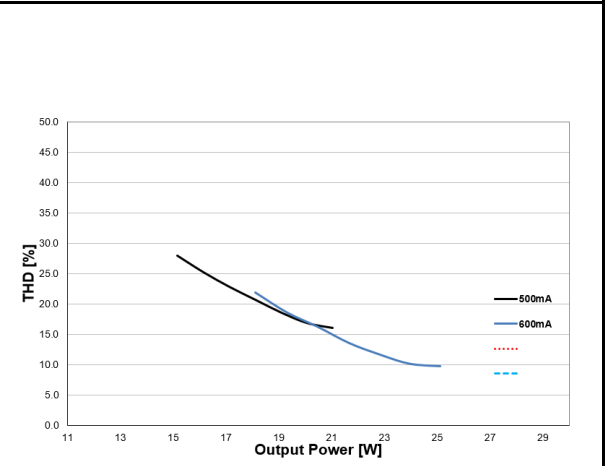
Typical Efficiency VS load



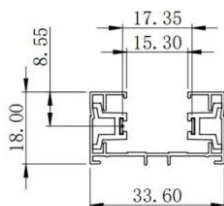
Typical Power factor VS load



Typical THD VS load



Minimum distance between two drivers in the track system is 25cm

Suitable track system:**Table 1:**

I _{out} (mA)	500	600
U _{min} [V]	30	30
U _{max} [V]	42	42
P _{min} [W]	15	18
P _{max} [W]	21	24.2
T _a [°C]	35	35
T _c [°C]	70	70
Line Current, nominal @230V [mA]	165	195
Max Power Loss @230V [W]	3.4	4.1
Input Power @230V [W]	24.2	29.3

SW	I _{rated} (mA)
ON	600
OFF	500

Current selection by DIP-switch

- Hot plug-in or secondary switching of LEDs is not permitted and may cause a very high current to the LEDs.
- Indication that the lamp controlgear relies upon the luminaire enclosure for protection against accidental contact with live parts.
- The max. mechanical loading F_{max} for the track driver mounted on the ceiling is **TBDN**, which should be intended as the whole system inclusive of the weight of luminaires and accessories.
- The max. mechanical loading F_{max} for the track driver mounted on the wall is **TBDN**, which should be intended as the whole system inclusive of the weight of luminaires and accessories.

Standards

Safety: IEC 61347-1, IEC 61347-2-13

Performance: IEC 62384

Radio interference: CISPR 15

Harmonic content: IEC 61000-3-2

Immunity: IEC 61000-3-3

Product name	EAN10	EAN40	Pieces / box
ELEMENT 25/220-240/600 CS T W KR	TBD	TBD	40
ELEMENT 25/220-240/600 CS T B KR	TBD	TBD	40

OSRAM GmbH

Head office:

Marcel-Breuer-Strasse 6
80807 Munich, Germany
Phone +49 89 6213-0
www.osram.co

OSRAM